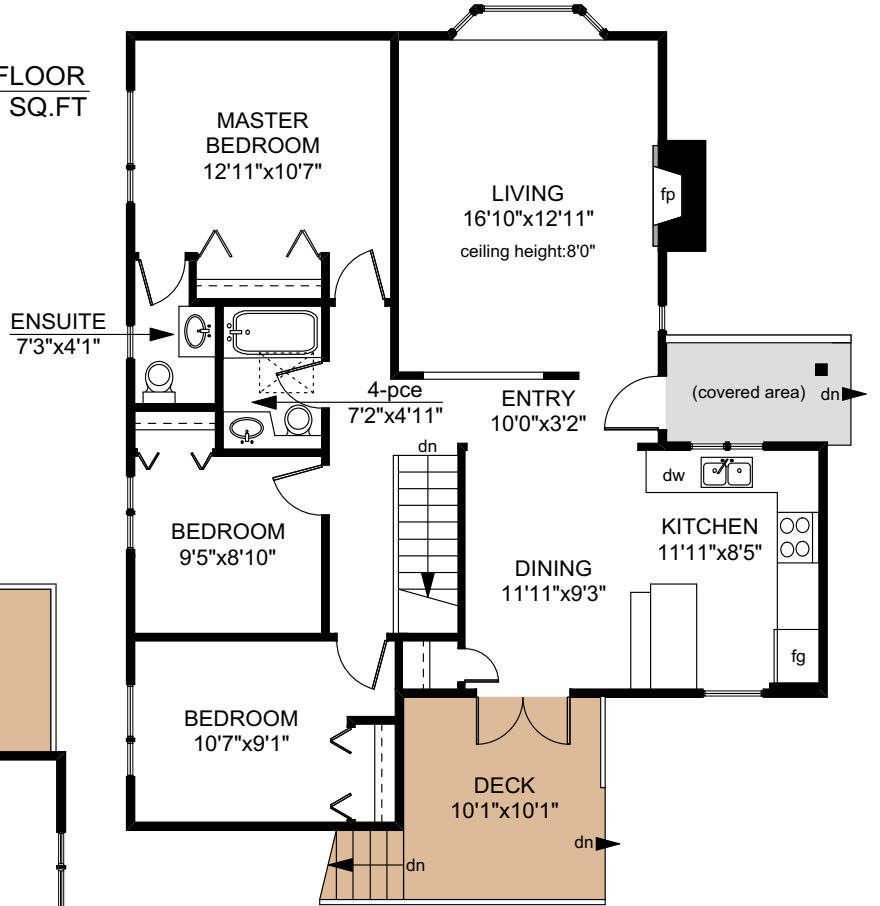


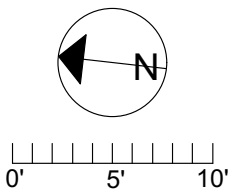
# 3919 PERSIMMON DRIVE

MAIN FLOOR  
1110 SQ.FT



LOWER FLOOR  
1063 SQ.FT

	FINISHED SQ. FT.	UNFINISHED SQ. FT.	TOTAL SQ. FT.
MAIN	1110	0	1110
LOWER	985	78	1063
TOTAL	2095	78	2173
DECKS	0	349	349



PREPARED FOR THE EXCLUSIVE USE OF THE NEAL ESTATE TEAM OF RE/MAX ALLIANCE

MEASURED ON: 11/19/18  
DRAWING FILE: 17323

Tafe Measure VICTORIA, B.C.  
Ph. 883.8894  
www.tafemeasure.com